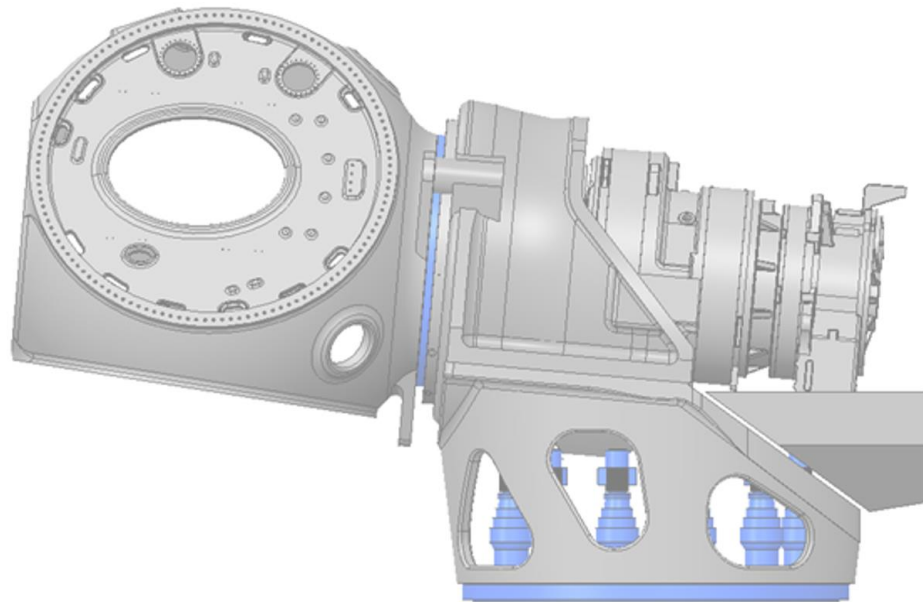


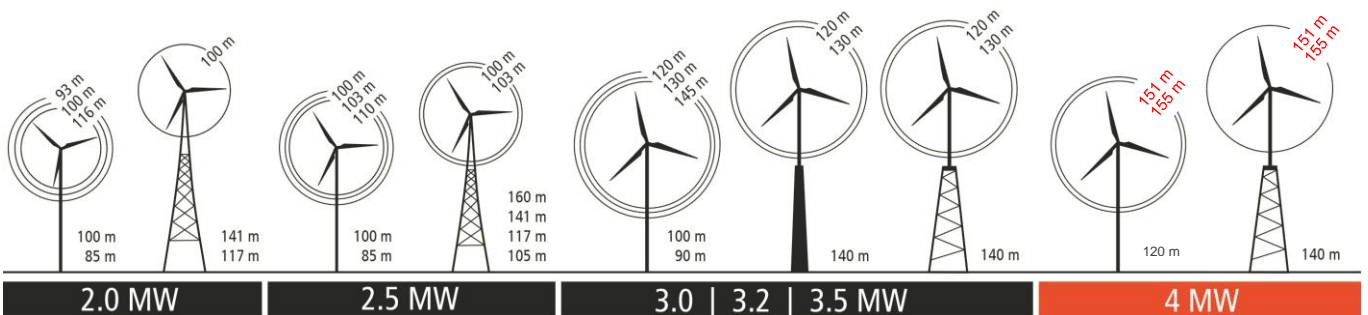
Rated power: 5.5 MW
 Rotor diameter: 172 m
 Wind class: IEC 3a / 2b



TECHNOLOGY ON DEMAND



Note: Nacelle cover and electrical internals to be detailed



TECHNICAL DATA

Rated power	5.5 MW (higher power ratings optional)
Rotor	172 m
Wind class	IEC 3a / 2b
Cut-in wind speed	3 m/s
Rated wind speed	12 m/s
Cut-out wind speed	25 m/s
Sound power	Subject to selected power rating
Hub height	Up to 160m
Drive train concept	Single moment bearing, LARUS Compact [®]
Electrical configuration	Medium-speed PMG / IGBT converter
Power control - LARUS Smart [®]	Triple independent pitch system
Safety System - LARUS Safe [®]	Matrix safety system acc. to GL guideline, ed. 2010

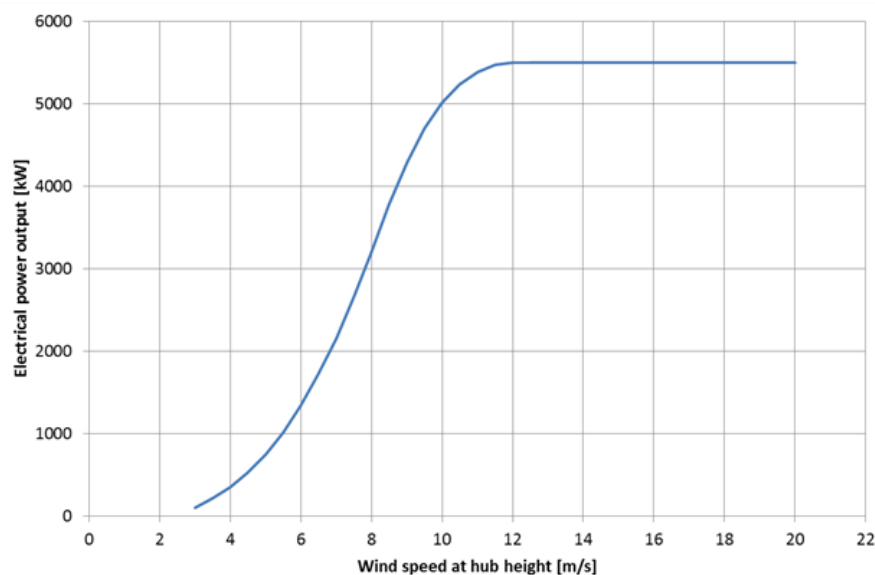
POWER CURVES*

V _{WIND} [m/s]	Power [kW]
3	101
4	346
5	744
6	1334
7	2157
8	3199
9	4286
10	5012
11	5387
12	5500
13	5500
14	5500
15	5500
25	5500

ANNUAL YIELD*

V _{WIND} [m/s]	Yield [MWh]
5.0	10944
5.5	13519
6.0	16059
6.5	18496
7.0	20790
7.5	22918
8.0	24867
8.5	26634

* Standard conditions and calculations acc. to IEC 61400-12



Editor:

W2E Wind to Energy GmbH
Grubenstraße 44

18055 Rostock | Germany

www.wind-to-energy.de